



**REVERSE VOLTAGE : 75 V**  
**CURRENT: 130 mA**

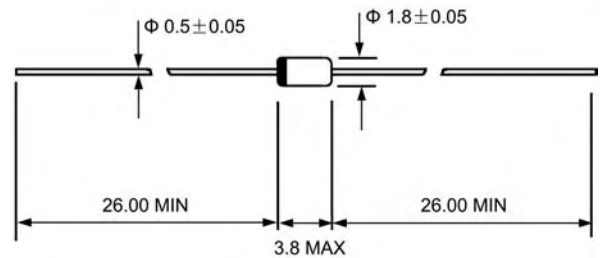
**DO - 35(GLASS)**

## Features

- ◇ Glass sealed envelope. (MSD)
- ◇ High reliability

## Mechanical Data

- ◇ Case: DO-35, glass case
- ◇ Polarity: Color band denotes cathode
- ◇ Weight: 0.005 ounces, 0.14 grams



Dimensions in millimeters

## MAXIMUM RATINGS AND ELECTRICAL CHARACTERISTICS

Ratings at 25°C ambient temperature unless otherwise specified.

Single phase, half wave, 60 Hz, resistive or inductive load. For capacitive load, derate by 20%.

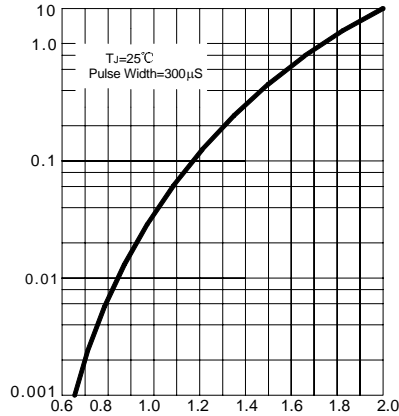
		1SS130	UNITS
Maximum DC reverse voltage	$V_R$	75	V
Maximum recurrent reverse voltage	$V_{RM}$	100	V
Power dissipation	$P_{tot}$	300	mW
Maximum average forward rectified current	$I_{F(AV)}$	130	mA
Peak forward surge current 8.3ms single half-sine-wave superimposed on rated load	$I_{FSM}$	600	mA
Maximum instantaneous forward voltage @ 100mA	$V_F$	1.0	V
Maximum reverse current @ $T_A=25^\circ C$ at rated DC blocking voltage @ $T_A=150^\circ C$	$I_R$	0.5 50	$\mu A$
Reverse recovery time @ $I_F=10mA, V_R=6V, R_L=50$	$t_{rr}$	4.0	ns
Operating junction temperature range	$T_J$	- 55 ---- + 175	$^\circ C$
Storage temperature range	$T_{STG}$	- 55 ---- + 175	$^\circ C$



## Ratings AND Characteristic Curves

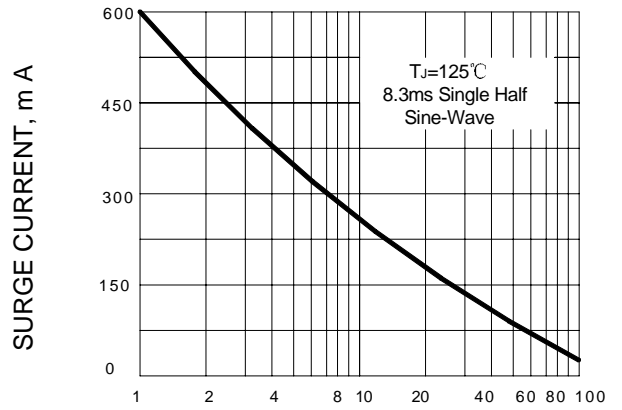
**FIG.1 – FORWARD CHARACTERISTICS**

INSTANTANEOUS FORWARD CURRENT, AMPERES



INSTANTANEOUS FORWARD VOLTAGE, VOLTS

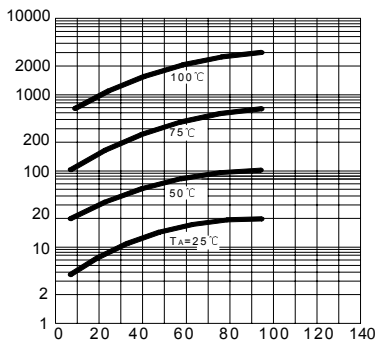
**FIG.2 – SURGE CURRENT CHARACTERISTICS**



FORWARD VOLTAGE, V

**FIG.3 -- REVERSE CHARACTERISTICS**

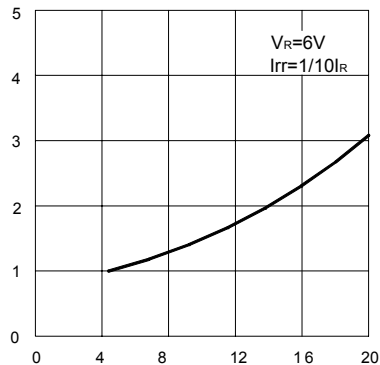
REVERSE CURRENT, nA



FORWARD VOLTAGE, V

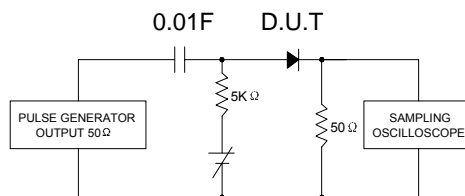
**FIG.4 – REVERSE RECOVERY TIME CHARACTERISTICS**

REVERSE RECOVERY TIME, ns



FORWARD CURRENT, mA

**FIG.5 – REVERSE RECOVERY TIME (trr) MEASUREMENT CIRCUIT**



PACKAGE	SPQ/PCS	CARTON SPQ/PCS	CARTON SIZE/CM	CARTON GW/KG	CARTON NW/KG
DO-35	5000/AMMO	100000	41X28.5X38	14.57	13.07