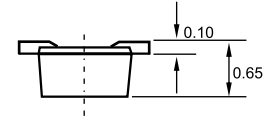
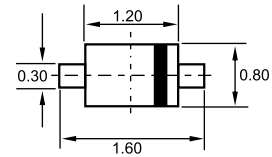


SOD-523



Dimensions in inches and (millimeters)

Features

- ✧ Extremely small surface mounting type.
- ✧ Small package.
- ✧ High speed and high reliability.

Applications

- ✧ High speed switching.

Ordering Information

| Type No. | Marking | Package Code |
|----------|---------|--------------|
| 1SS400 | A | SOD-523 |

MAXIMUM RATING @ Ta=25°C unless otherwise specified

| Parameter | Symbol | Limits | Unit |
|----------------------------|-------------|---------|------|
| Peak reverse voltage | V_{RM} | 90 | V |
| DC Reverse voltage | V_R | 80 | V |
| Peak forward current(max.) | I_{FM} | 225 | mA |
| Forward output current | I_o | 100 | mA |
| Surge current(1s) | I_{surge} | 0.5 | A |
| Total power dissipation | P_{tot} | 150 | mW |
| Junction temperature | T_j | 125 | °C |
| Storage temperature | T_{stg} | -55-125 | °C |

ELECTRICAL CHARACTERISTICS @ Ta=25°C unless otherwise specified

| Parameter | Symbol | Min. | Typ. | Max. | Unit | Conditions |
|-----------------------|----------|------|------|------|---------|-----------------------------------|
| Forward voltage | V_F | | | 1.2 | V | $I_F=100mA$ |
| Reverse current | I_R | | | 0.1 | μA | $V_R=80V$ |
| Diode capacitance | C_d | | 0.72 | 3.0 | pF | $V_R=0.5V, f=1MHz$ |
| Reverse recovery time | t_{rr} | | | 4 | ns | $V_R=6V, I_F=10mA, R_L=100\Omega$ |



TYPICAL CHARACTERISTICS @ Ta=25°C unless otherwise specified

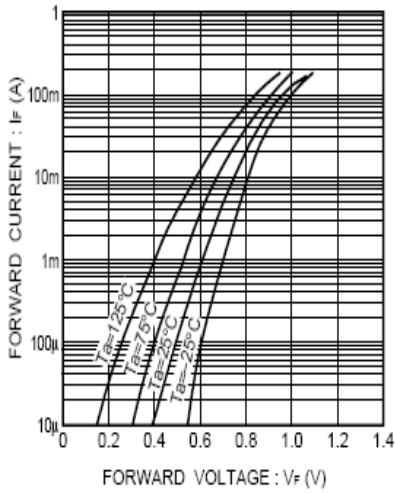


Fig.1 Forward characteristics

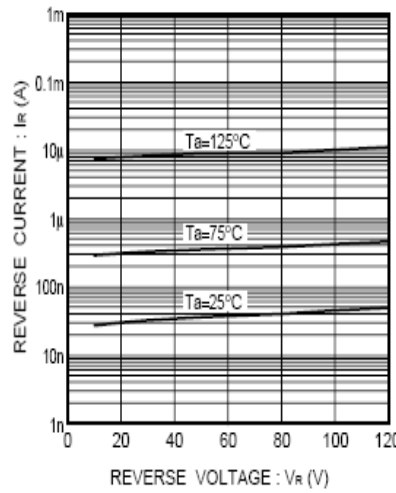


Fig.2 Reverse characteristics

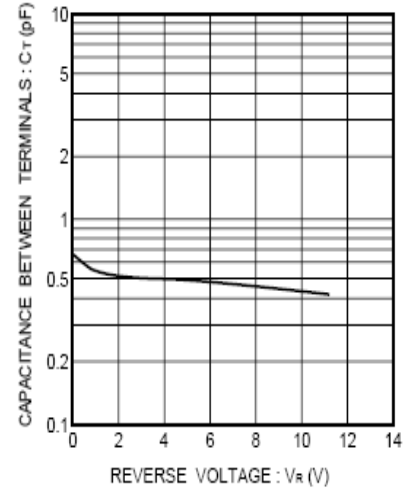


Fig.3 Capacitance between terminals

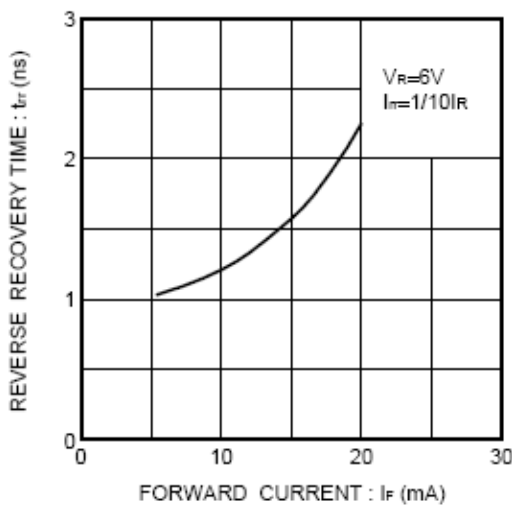


Fig.4 Reverse recovery time characteristics

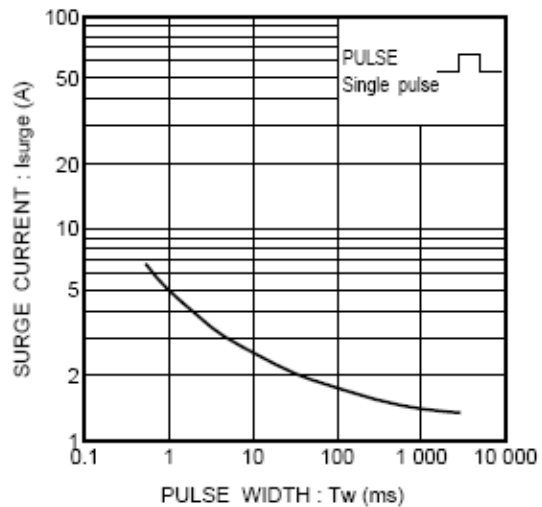


Fig.5 Surge current characteristics