



Features

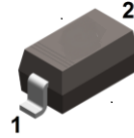
- Low forward voltage drop
- Fast switching speed
- Low capacitance
- Guard ring construction for transient protection

Typical Applications

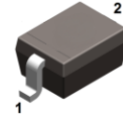
- Surface mount fast switching schottky diode

Mechanical Data

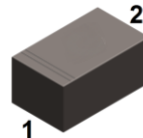
- Case: SOD-123, SOD-323, DFN1006-2
- Terminals: solderable per MIL-STD-202, Method 208



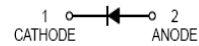
1N5711W
SOD-123



1N5711WS
SOD-323



1N5711L
DFN1006-2



Ordering Information

Part Number	Package	Shipping	Marking Code
1N5711W	SOD-123	3000 pcs / Tape & Reel	SA
1N5711WS	SOD-323	3000 pcs / Tape & Reel	SA
1N5711L	DFN1006-2	10000 pcs / Tape & Reel	SA

Maximum Ratings (@T_A=25°C unless otherwise specified)

Parameter	Symbol	Value	Unit
Peak Repetitive Reverse Voltage	V _{RRM}	70	V
Working Peak Reverse Voltage	V _{RWM}		
DC Reverse Voltage	V _R		
RMS Reverse Voltage	V _{R(RMS)}	49	V
Forward Continuous Current	I _F	15	mA

Thermal Characteristics

Parameter	Symbol	1N5711W	1N5711WS	1N5711L	Unit
Power dissipation	P _D	400	200	100	mW
Typical thermal resistance per leg	R _{θJA} *	250	500	1000	°C /W
Operating junction temperature range	T _J	-55 to +125			°C
Storage temperature range	T _{STG}	-55 to +150			°C

* Part mounted on FR-4 board with recommended pad layout



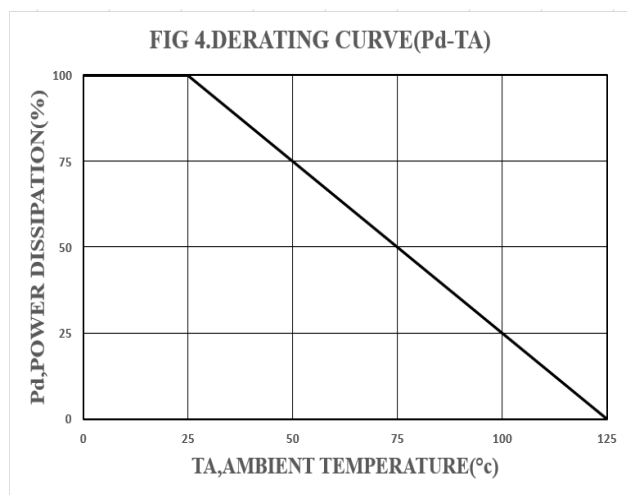
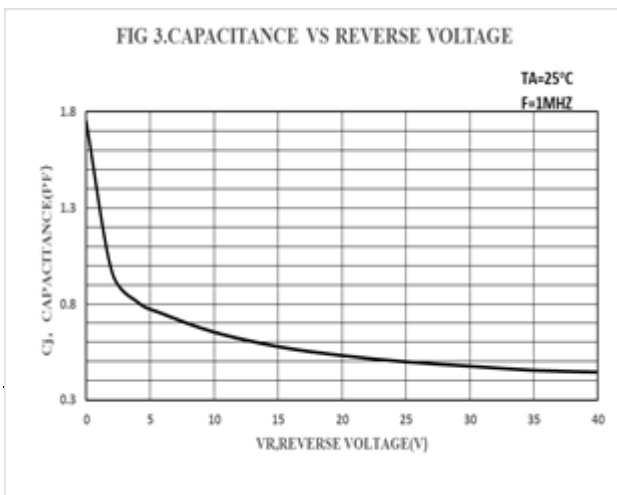
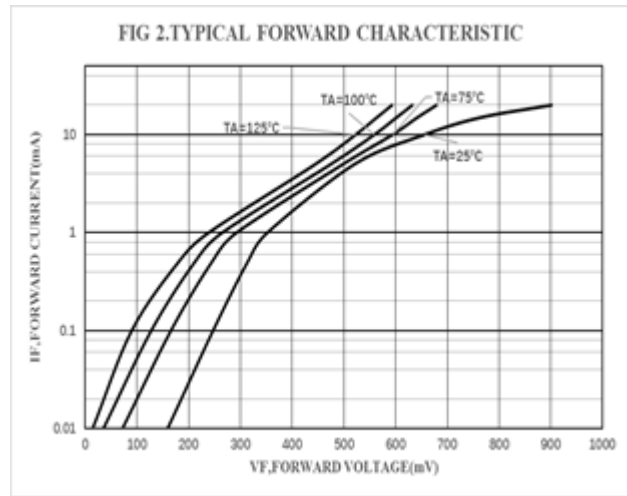
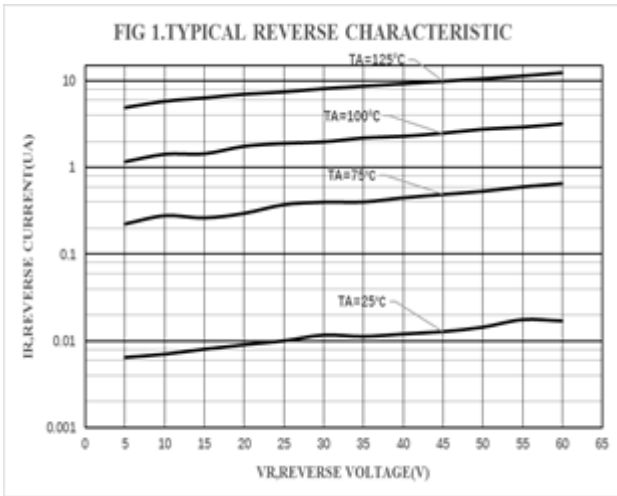
1N5711W 1N5711WS 1N5711L Small Signal Schottky Barrier Diode



Electrical Characteristics (@ $T_A=25^\circ\text{C}$ unless otherwise specified)

Parameter	Symbol	Conditions	Min	Typ	Max	Unit
Reverse Breakdown Voltage	$V_{(BR)R}$	$I_R=10\mu\text{A}$	70	-	-	V
Forward Voltage	V_F	$I_F=1\text{mA}$	-	-	0.41	V
		$I_F=15\text{mA}$	-	-	1	V
Reverse Leakage Current	I_R	$V_R=50\text{V}$	-	-	200	nA
Capacitance Between Terminals	C_T	$V_R=0\text{V}, f=1\text{MHz}$	-	-	2	pF
Reverse Recovery Time	t_{rr}	$I_F=I_R=10\text{mA}, I_{rr}=0.1 \cdot I_R$ $R_L=100\Omega$	-	-	1	ns

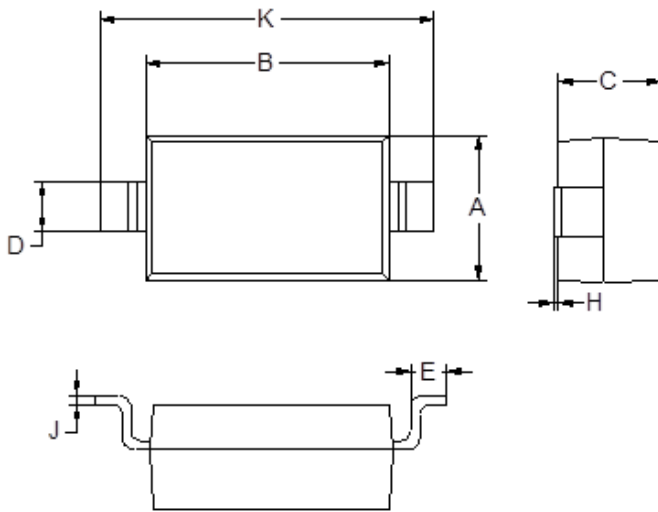
Ratings and Characteristic Curves ($T_A=25^\circ\text{C}$ unless otherwise noted)





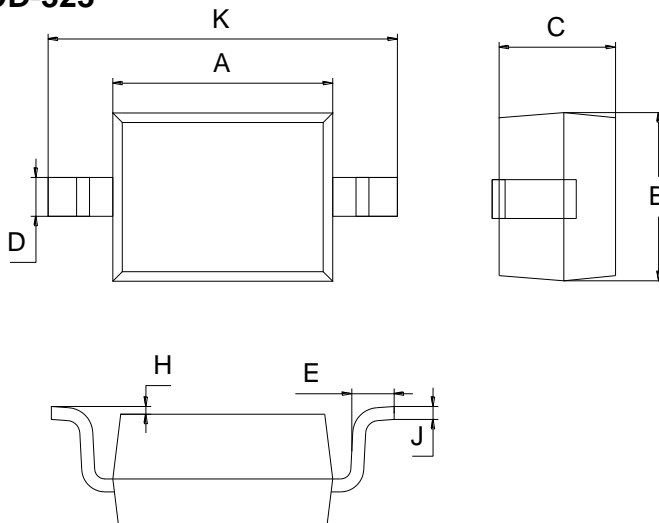
Package Outline Dimensions (unit: mm)

SOD-123



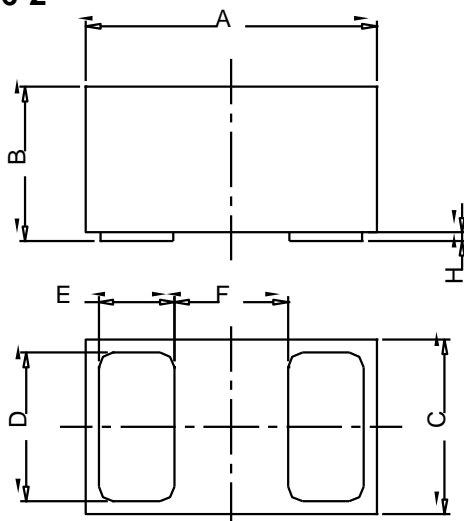
SOD-123		
Dim	Min	Max
A	1.45	1.75
B	2.55	2.85
C	1.00	1.30
D	0.50	0.60
E	0.25	0.45
H	0.02	0.10
J	0.05	0.15
K	3.55	3.85

SOD-323



SOD-323		
Dim	Min	Max
A	1.60	1.80
B	1.20	1.40
C	0.80	0.90
D	0.25	0.35
E	0.22	0.42
H	0.02	0.10
J	0.05	0.15
K	2.55	2.75

DFN1006-2

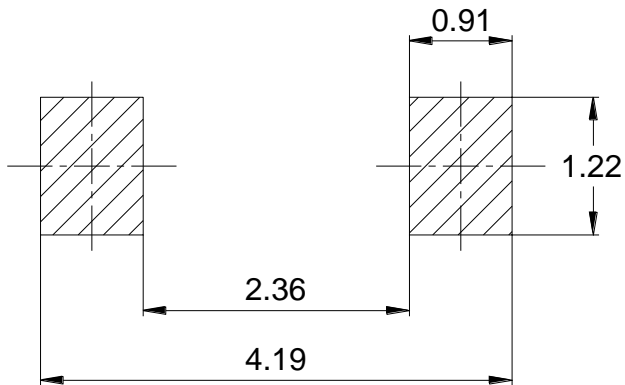


DFN1006-2			
Dim	Min	Typ	Max
A	0.95	1.00	1.075
B	0.47	0.50	0.53
C	0.55	0.60	0.675
D	0.45	0.50	0.55
E	0.20	0.25	0.30
F	-	0.40	-
H	0	0.03	0.05

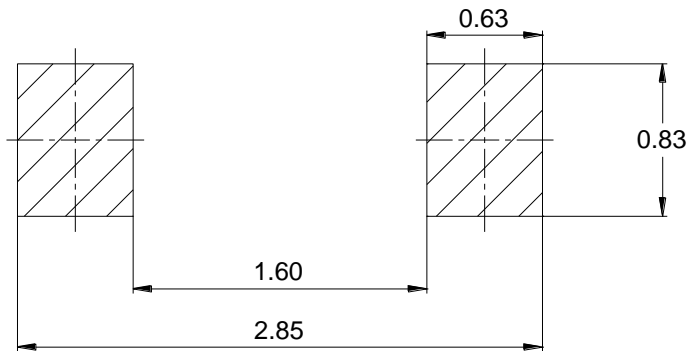


Mounting Pad Layout (unit: mm)

SOD-123



SOD-323



DFN1006-2

