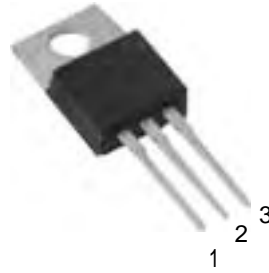
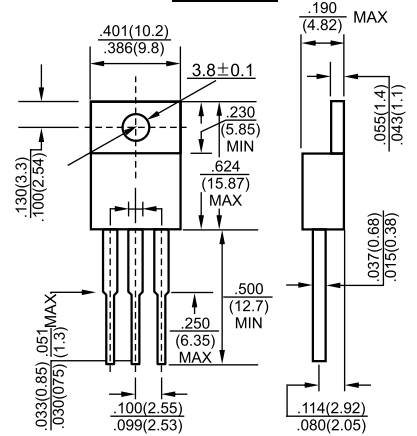




### TO-220



1.IN  
2.GND  
3.OUT



Dimensions in inches and (millimeters)

### Features

- ✧ Maximum Output current  
 $I_{OM}$ : 0.5 A
- ✧ Output voltage  
 $V_O$ : 6V
- ✧ Continuous total dissipation  
 $P_D$ : 1.5 W ( $T_a = 25^\circ\text{C}$ )

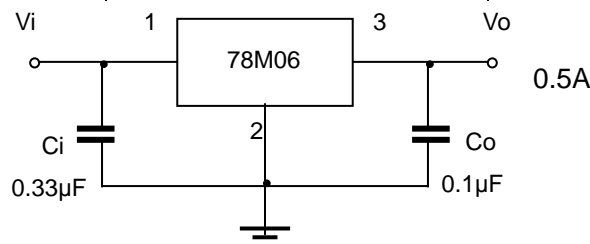
### ABSOLUTE MAXIMUM RATINGS (Operating temperature range applies unless otherwise specified)

Parameter	Symbol	Value	Unit
Input Voltage	$V_i$	35	V
Operating Junction Temperature Range	$T_{OPR}$	0-+125	$^\circ\text{C}$
Storage Temperature Range	$T_{STG}$	-65-+150	$^\circ\text{C}$

### ELECTRICAL CHARACTERISTICS ( $V_i=11\text{V}, I_o=350\text{mA}, C_i=0.33\mu\text{F}, C_o=0.1\mu\text{F}$ , unless otherwise specified)

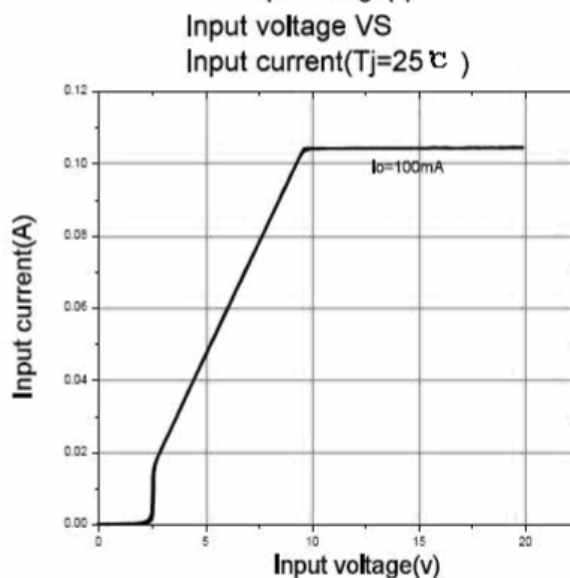
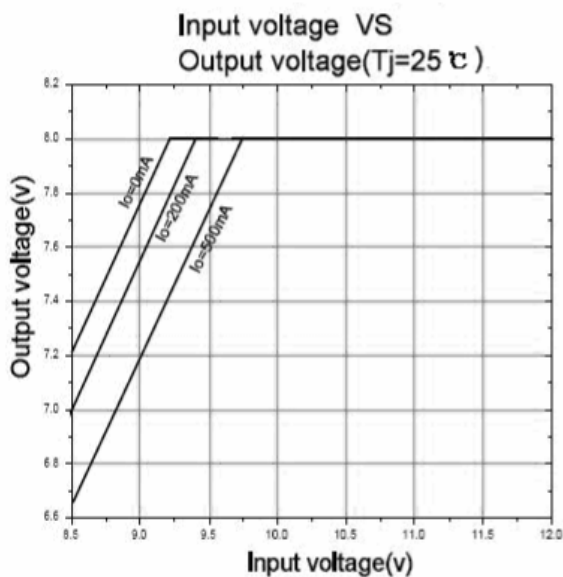
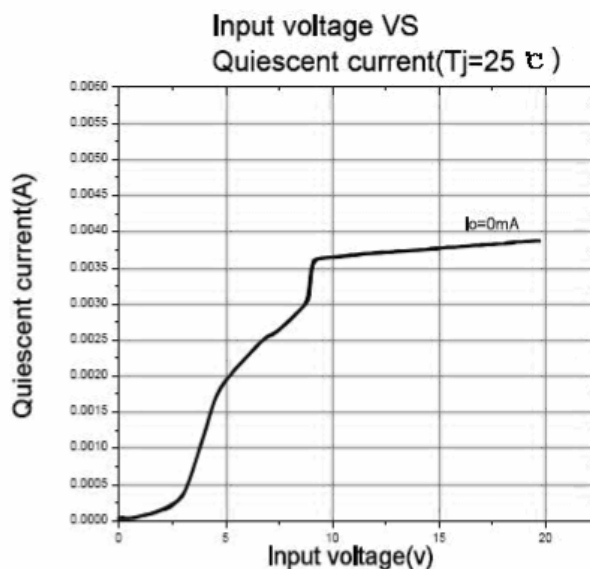
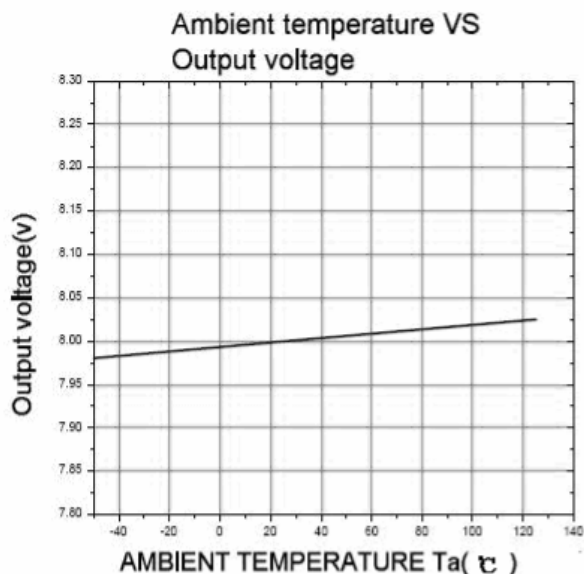
Parameter	Symbol	Test conditions	MIN	TYP	MAX	UNIT
Output voltage	$V_o$	$25^\circ\text{C}$	5.75	6	6.25	V
		$8\text{V} \leq V_i \leq 21\text{V}, I_o=5\text{mA}-350\text{mA}$ $P_o \leq 15\text{W}$	0-125 $^\circ\text{C}$	5.7	6	6.3
Load Regulation	$\Delta V_o$	$I_o=5\text{mA}-0.5\text{A}$	$25^\circ\text{C}$	18	120	mV
		$I_o=5\text{mA}-200\text{mA}$	$25^\circ\text{C}$	10	60	mV
Line regulation	$\Delta V_o$	$8\text{V} \leq V_i \leq 25\text{V}, I_o=200\text{mA}$	$25^\circ\text{C}$	5	100	mV
		$9\text{V} \leq V_i \leq 25\text{V}, I_o=200\text{mA}$	$25^\circ\text{C}$	1.5	50	mV
Quiescent Current	$I_q$	$25^\circ\text{C}$		4.3	6	mA
Quiescent Current Change	$\Delta I_q$	$9\text{V} \leq V_i \leq 25\text{V}, I_o=200\text{mA}$	0-125 $^\circ\text{C}$		0.8	mA
		$5\text{mA} \leq I_o \leq 350\text{mA}$	0-125 $^\circ\text{C}$		0.5	mA
Output Noise Voltage	$V_N$	$10\text{Hz} \leq f \leq 100\text{KHz}$	$25^\circ\text{C}$	45		$\mu\text{V}$
Ripple Rejection	RR	$9\text{V} \leq V_i \leq 19\text{V}, f=120\text{Hz}, I_o=300\text{mA}$	0-125 $^\circ\text{C}$	59	80	dB
Dropout Voltage	$V_d$	$I_o=350\text{mA}$	$25^\circ\text{C}$	2		V
Short Circuit Current	$I_{sc}$	$V_i=11\text{V}$	$25^\circ\text{C}$	270		mA
Peak Current	$I_{pk}$	$25^\circ\text{C}$		0.7		A

### TYPICAL APPLICATION





## Typical Characteristics



Package	Packing	Box Size L×W×H(mm)	Quantity(pcs/box)	Carton Size L×W×H(mm)	Quantity(pcs/carton)
TO-220	50pcs/Tube	560×150×50	1000	570×290×180	5000