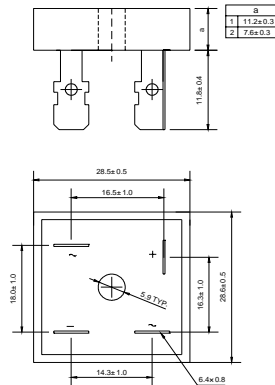


VOLTAGE RANGE: 50 --- 1000 V
CURRENT: 50.0 A

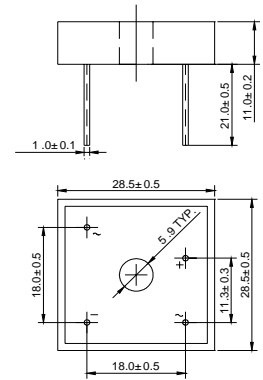
Features

- ◇ Rating to 1000V PRV
- ◇ 500 Amperes surge capability
- ◇ High efficiency
- ◇ Electrically isolated metal case for maximum heat dissipation
- ◇ Mounting: thru hole for # 8 screw Mounting

KBPC



KBPC-W



Dimensions in millimeters

MAXIMUM RATINGS AND ELECTRICAL CHARACTERISTICS

Ratings at 25°C ambient temperature unless otherwise specified.

Single phase, half wave, 60 Hz, resistive or inductive load. For capacitive load, derate by 20%.

		KBPC(W)	KBPC(W)	KBPC(W)	KBPC(W)	KBPC(W)	KBPC(W)	KBPC(W)	UNITS
		50005	5001	5002	5004	5006	5008	5010	
Maximum recurrent peak reverse voltage	V_{RRM}	50	100	200	400	600	800	1000	V
Maximum RMS voltage	V_{RMS}	35	70	0	280	420	560	700	V
Maximum DC blocking voltage	V_{DC}	50	100	200	400	600	800	1000	V
Maximum average forward Output current @ $T_A=25^\circ C$	$I_{F(AV)}$	50.0							A
Peak forward surge current 8.3ms single half-sine-wave superimposed on rated load	I_{FSM}	500.0							A
I^2t Rating for fusing @ $T_j=25^\circ C$	I^2t	1037.5							A ² S
Maximum instantaneous forward voltage @ 25.0 A	V_F	1.1							V
Maximum reverse current @ $T_A=25^\circ C$ at rated DC blocking voltage @ $T_A=100^\circ C$	I_R	10.0 1.0							μA mA
Typical Junction Capacitance per leg (note1)	C_j	300							pF
Typical thermal resistance per leg	$R_{\theta JC}$	0.7							°C/W
Operating junction temperature range	T_J	- 55 ---- + 150							°C
Storage temperature range	T_{STG}	- 55 ---- + 150							°C



Ratings AND Characteristic Curves

FIG1:Io-Tc Curve

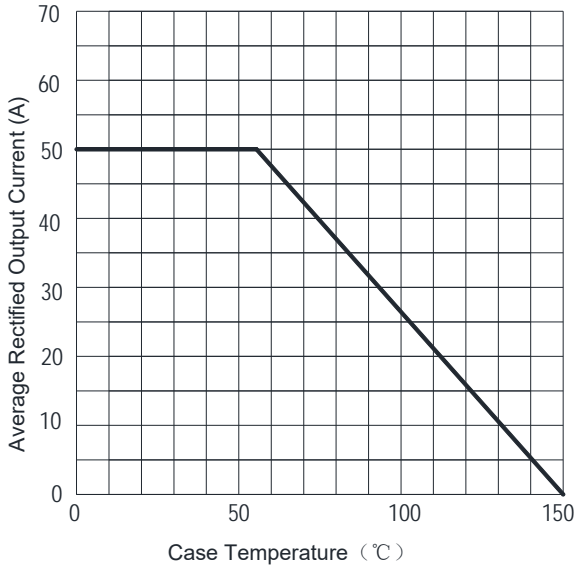


FIG2:Surge Forward Current Capability

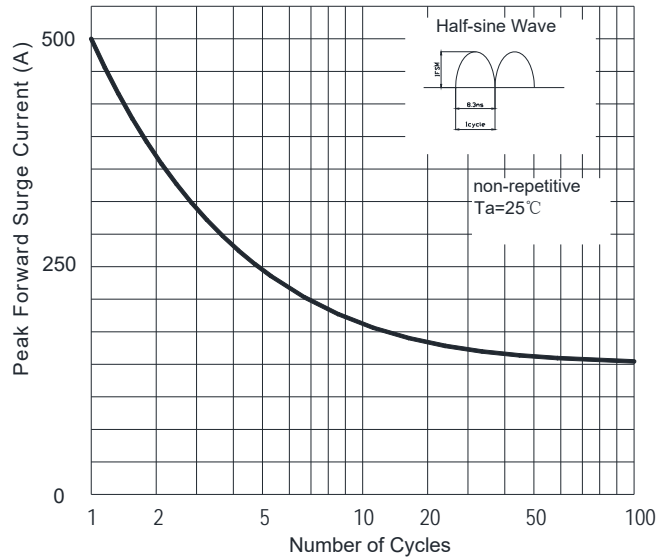


FIG3:Instantaneous Forward Voltage

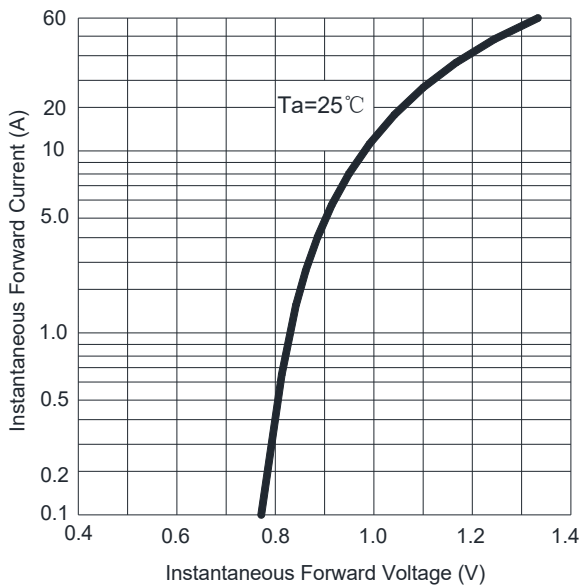


FIG4:Typical Reverse Characteristics

